

# MDS

## Decision Model

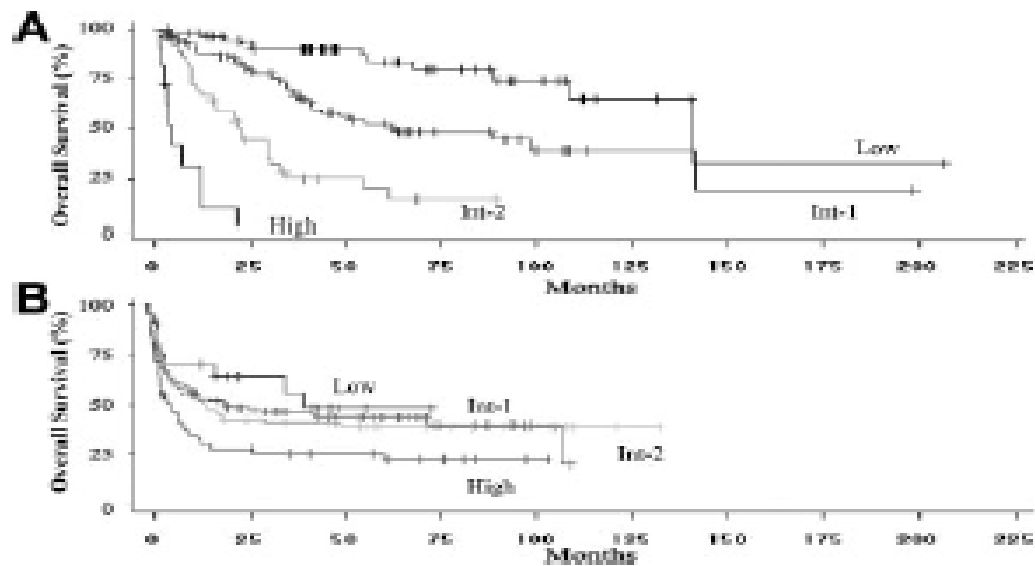
# Stem Cell Transplantation Is Only Curative Therapy!!!

# Timing for HCT Consultation

## *Adult Leukemias and Myelodysplasia*

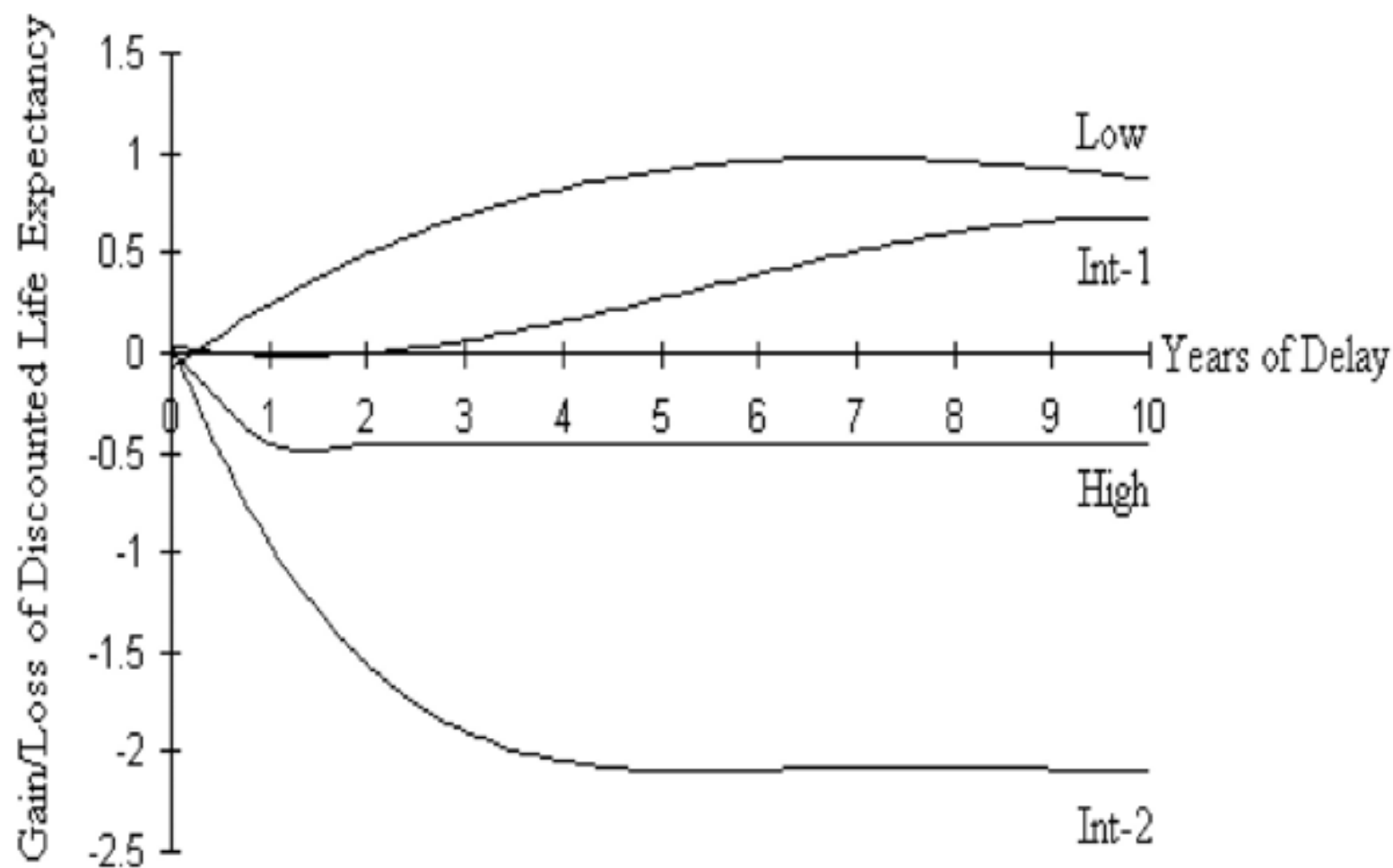
### **Myelodysplastic syndromes (MDS)**

- Any intermediate or high IPSS or IPSS-R score
- Any MDS with poor prognostic features, including:
  - Treatment-related MDS
  - Refractory cytopenias
  - Adverse cytogenetics
  - Transfusion dependence
  - Failure of hypomethylating agents

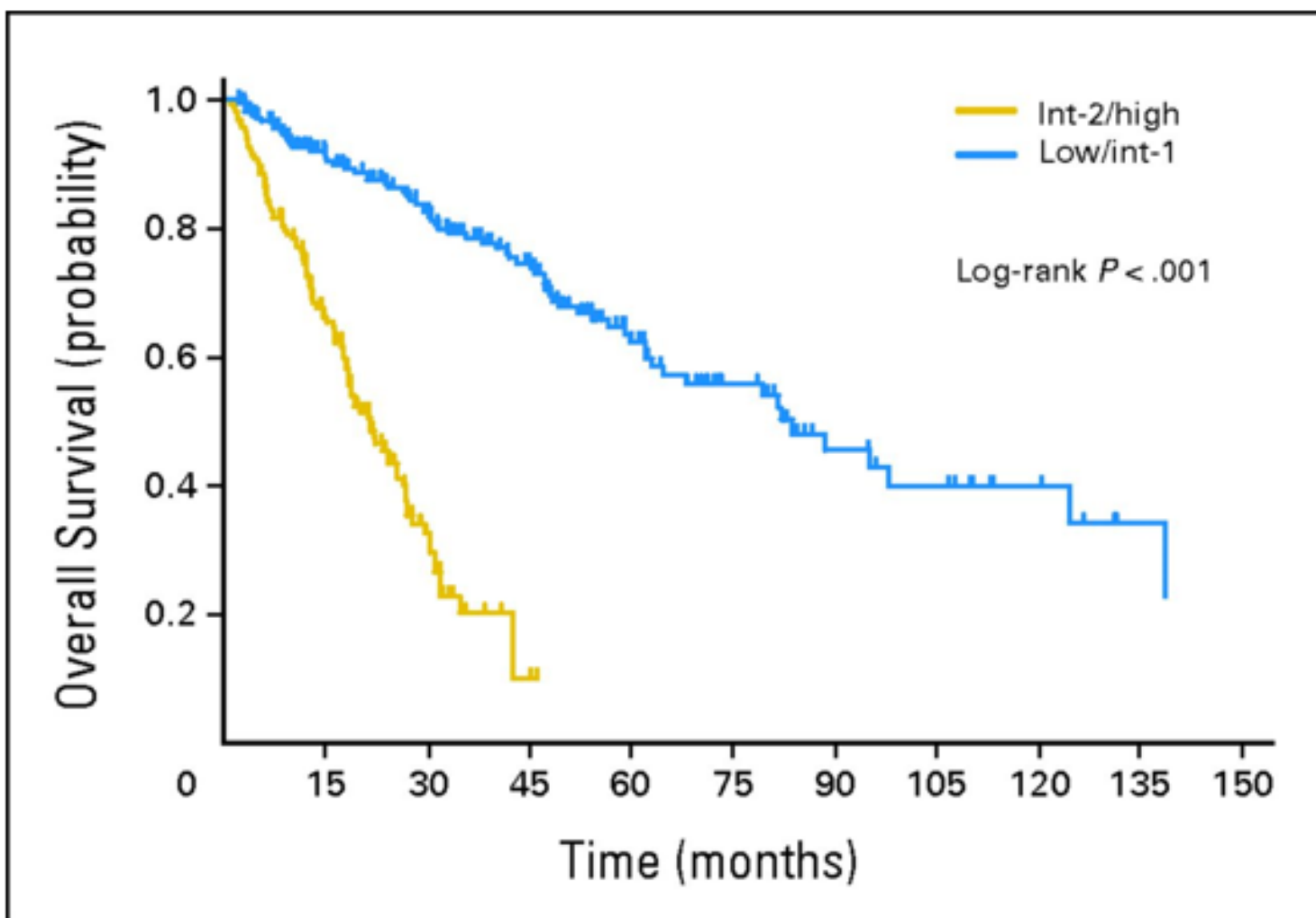


**Figure 2.** Overall survival of patients included in the analysis. (A) Overall survival of the International MDS Risk Assessment Workshop patients who did not undergo stem cell transplantation, stratified by IPSS score at the time of diagnosis ( $P < .001$  for differences in risk groups). (B) Overall survival of the IBMTR/FHCRC bone marrow transplantation cohort of patients, stratified by IPSS risk score at the time of transplantation ( $P < .001$  for differences in risk groups).

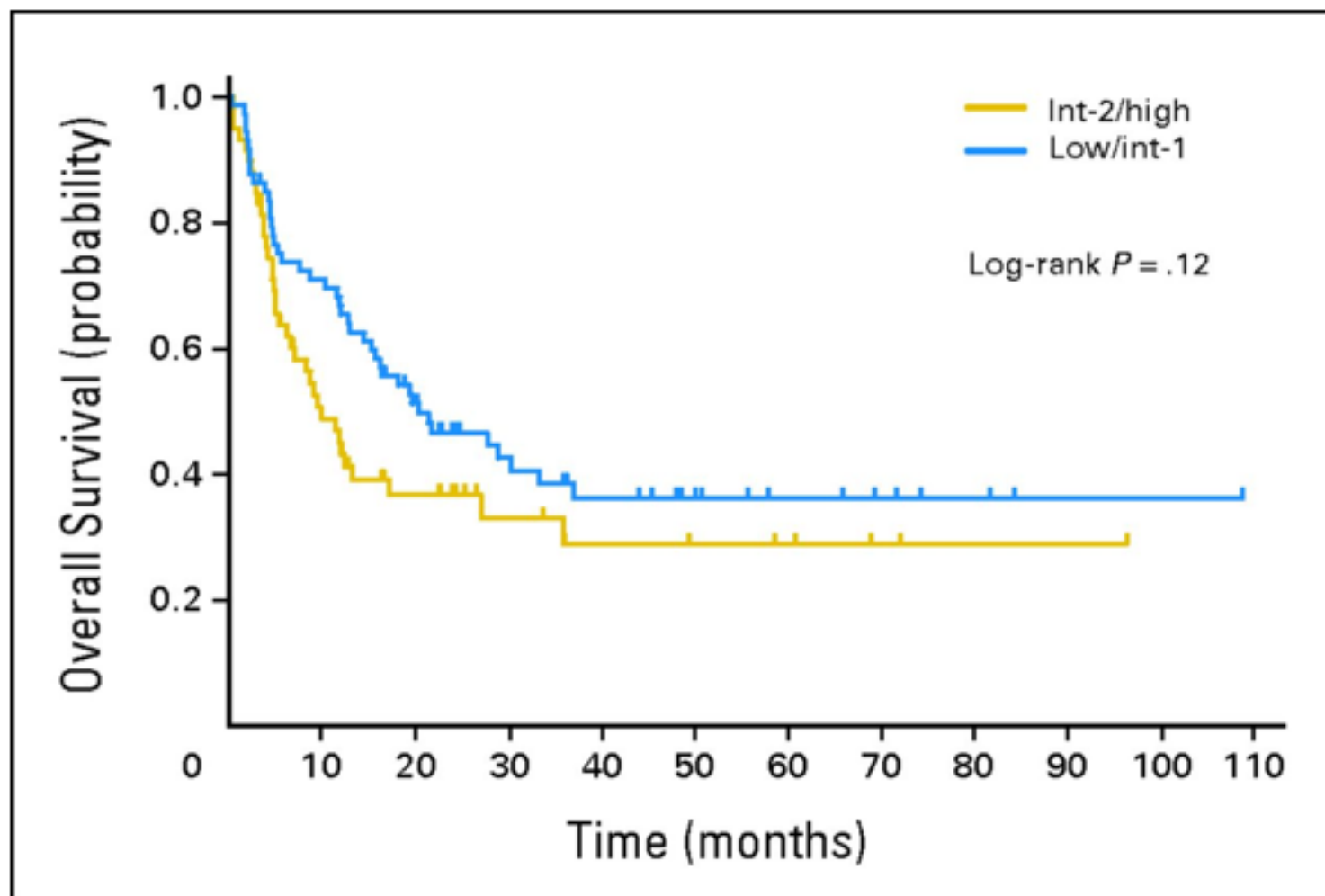
## MDS: Timing of HCT Depends on IPSS Score



## Overall survival of non-HCT cohorts stratified by low/intermediate (int)-1 and int-2/high IPSS in MDS



## Overall survival of RIC-HCT cohorts stratified by low/intermediate (int)-1 and int-2/high IPSS in MDS



# Survival after Unrelated Donor HCT for Myelodysplastic Syndrome (MDS), 2004-2014

